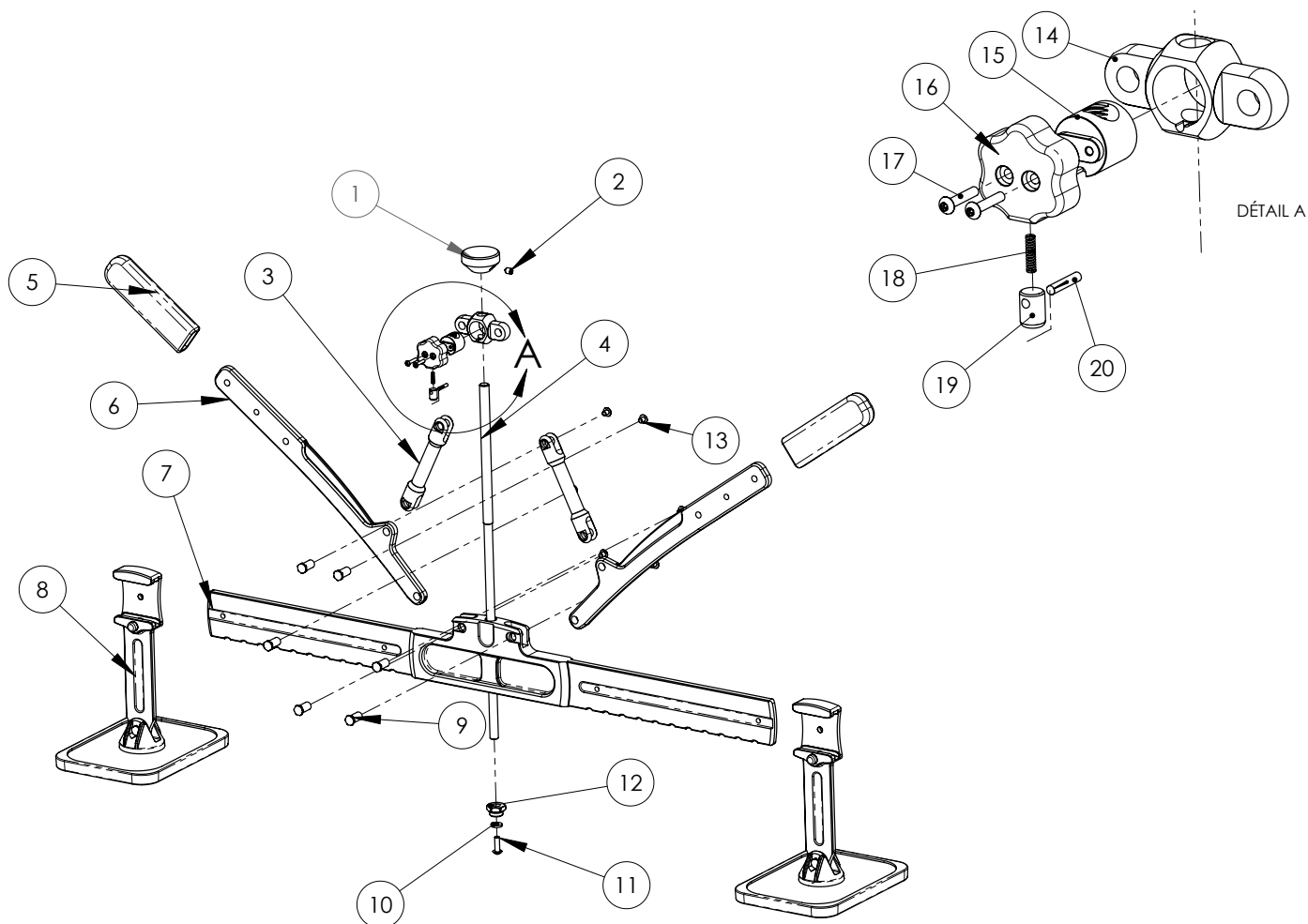


**BARRES DE DÉBOSELAGE PREMIUM
PREMIUM DUAL-FOOT LEVELLING BAR**

MONTAGE BARRE DE TIRAGE PREMIUM / ASSEMBLING THE PREMIUM DUAL-FOOT LEVELLING BAR



No.	Ref.		
1	90044ST	x1	Molette M10 / M10 clamping knob
2	42028	x1	Vis mx M6x8 STHC / M6x8 STHC MX screw
3	95596ST	x2	Bielle / Connecting rod
4	42207	x1	Goujon M10 395 mm / M10 threaded rod 395 mm
	42206	x1	Goujon M10 465 mm / M10 threaded rod 465 mm
5	72010	x2	Poignée / Handle
6	95597ST	x2	Levier / Lever
7	95615ST	x1	Barre 720mm / Bar (720 mm)
8	059320	x2	Pied court / Shortened leg
	059337	x2	Pied long / Extended leg
9	51586	x8	Axe / Locking pin

No.	Ref.		
10	93346Z	x1	Rondelle M5x12x2 / M5x12x2 washer
11	42169	x1	Vis mx M5x16 Torx 25 / M5x16 Torx 25 MX screw
12	51585	x1	Ecrou M14 / M14 nut
13	42116	x8	Vis mx M5x6 TCB Torx 25 / M5x6 Torx 25 screw
14	95595ST	x1	Tête de barre / Bar head
15	93375	x1	Ecrou rapide / Speed nut
16	93374	x1	Bouton 6 lobes / Six-lobed lobe knob
17	41039	x2	Vis mx M3x16 Torx 10 / M3x16 Torx 10 MX screw
18	55208	x1	Ressort / Spring
19	51593	x1	Bouton déverrouillage / Release button
20	42120	x1	Goupille 3x16 / Locking pin 3x16